

## Elimivibe Silicone Heat Shield Assembly

1. Fold the arc part of the shield around and insert one side of the tab into the slot on the other side of the arc (Figure 1). Pull tab through the slot (Figure 2).

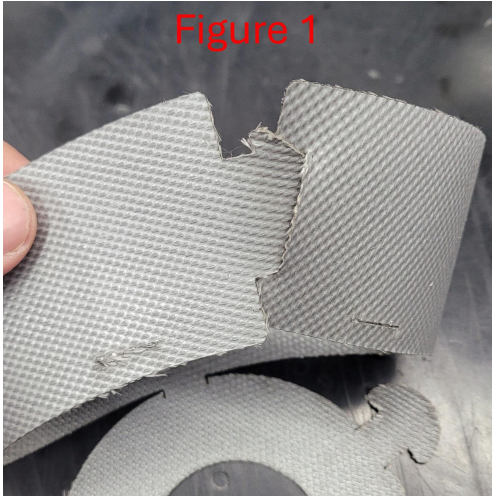


Figure 1

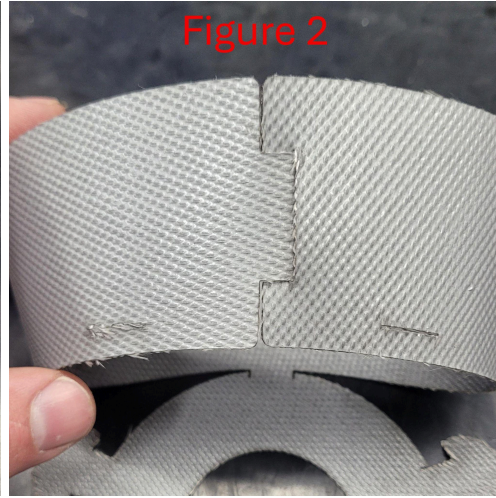


Figure 2

2. Fold the top down onto the arc and insert one of the tabs into the slot on the arc just like the previous step (Figure 3). Pull tab through the slot (Figure 4). Do this step to all of the tabs.

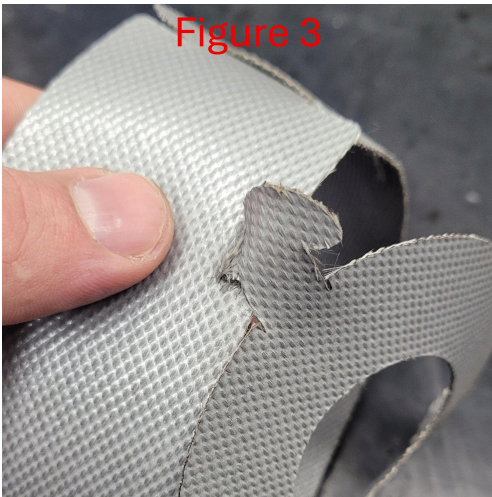


Figure 3

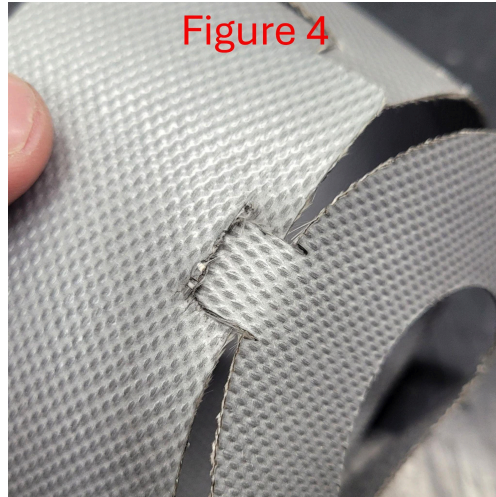


Figure 4

3. The finished silicone heat shield should look like this (Figure 5). Now place the heat shield onto the engine mount pin but be sure not to push it all the way against the engine mount housing. For these heat shields to work properly there needs to be air space between the heat shield and the engine mount (Figure 6).

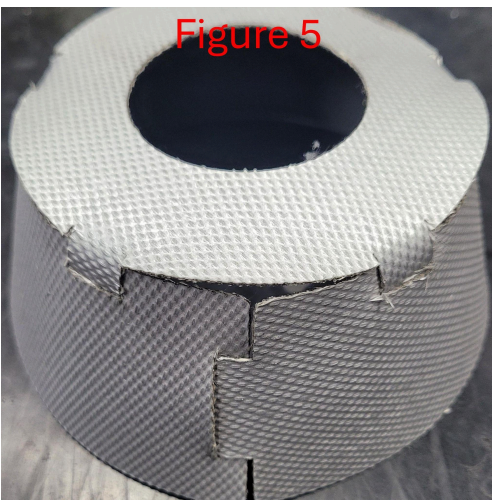


Figure 5

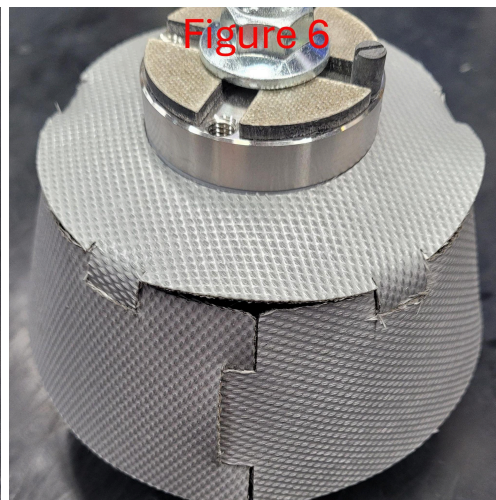


Figure 6